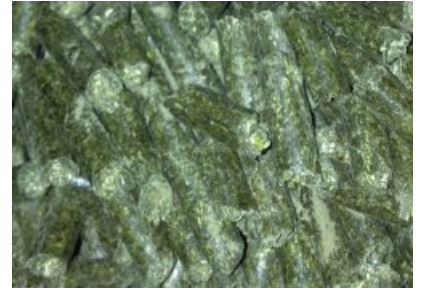


## Pellet forage



**Quality:** First

**Measures:** Diameter: 6/7  
mm

**Analysis:** Protein (s.s.s): 12%  
Fibre (s.s.s): < 33%  
Moisture: < 10%

**Observations:**

- Ray-gras
- Festuca
- Grasses and other herbs that can be reproduced in alfalfa cultivation
- AlfalfaRay-gras
- Alfalfa